

# iLLUMA PCL

**PCL (polycaprolactone) 12.5%**

*Experience the ultimate skin transformation  
with our **iLLUMA PCL Filler***





### **What is PCL?**

PCL (polycaprolactone) is a biocompatible and biodegradable synthetic polymer which restores volume and stimulates collagen synthesis.

### **Premium collagen stimulator**

A cutting-edge solution in the world of facial rejuvenation. iLLUMA PCL filler stands out for its exceptional versatility and durability, offering a safe and effective method to address volume loss, wrinkles, and facial contours.

**PCL concentration: 12.5%**

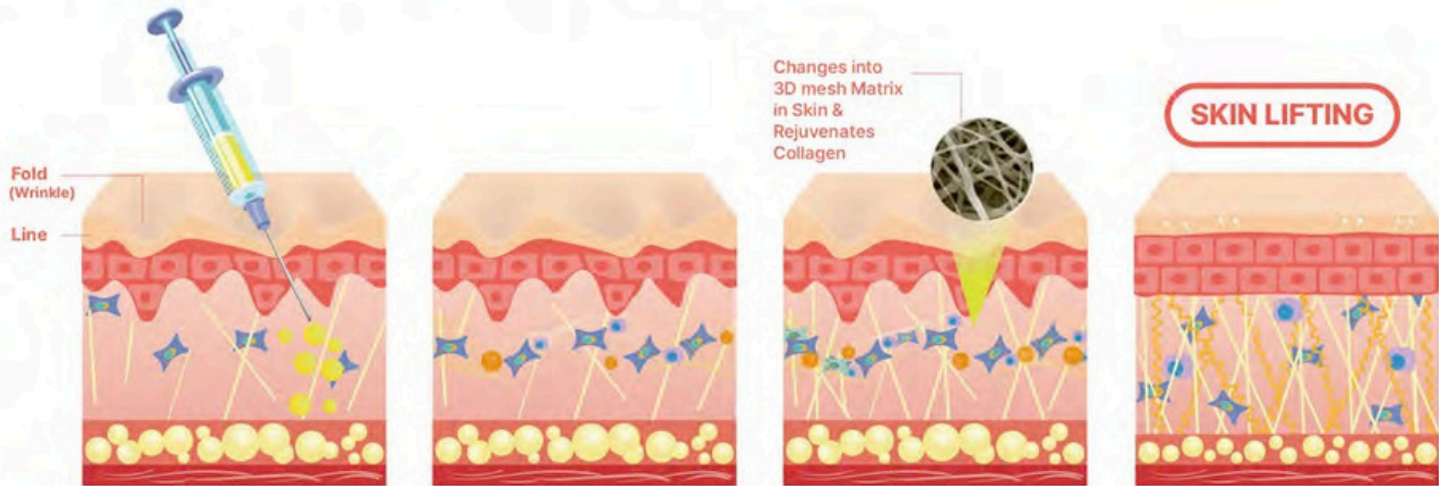
**1.0 mL x 1 syringe**

## iLLUMA PCL nano particle characteristics

- iLLUMA PCL is made of PCL nanoparticle of  $475 \pm 75$  nm size.  
After being injected in the body, PCL is encapsulated by collagen.  
Due to its proper particle size, it escapes from phagocytosis and induces neo-collagenesis
- PCL nanofiller has few side effects such as aggregation and inflammatory reaction.
- The PCL nanoparticles are regular, spherical.



# How iLLUMA PCL works



1. PCL filler injected,
2. PCL nanoparticles induce a subclinical inflammatory response,
3. Cell proliferation occurs and collagen is deposited in the extracellular matrix.
4. Over time, the PCL degrades, the inflammatory response wanes, and host collagen production increases.





A vertical strip on the left side of the slide shows the packaging for iLLUMA PCL. It features a black background with yellow and white text, including the brand name 'iLLUMA PCL' and 'PCL' in a yellow box.

## **iLLUMA PCL Effects**

**01**

**Restoring volume**

**02**

**Stimulating collagen, fibroblast  
and elastin synthesis**

**03**

**Skin hydrating**

**04**

**Face lifting**

**05**

**Reducing wrinkles**

**06**

**Enhancing skin elasticity**

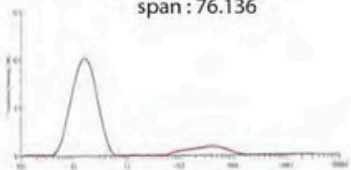
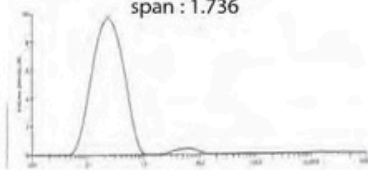
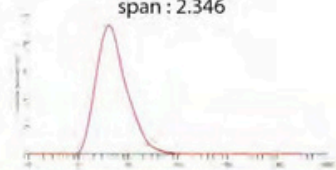


## Advantages of iLLUMA PCL

Effect lasts up to 1 year with just 2 to 3 sessions

- Long-lasting: Larger particle size compared to other nanoparticles (100nm level), so the retention period increases in the body.
- It is possible to compromise the advantages of Nano and Microparticle PCL.
- High safety: It has fewer nodular side effects than rough and irregularly shaped particles. Therefore, it can be injected superficially and spread.
- Less pain: through easy and smooth injection by controlling the extrusion force at 5N with a 33G needle.

# PHYSICOCHEMICAL PROPERTIES OF iLLUMA PCL

BRAND NAME		PRODUCT A	PRODUCT B	iLLUMA PCL
Composition		Polycaprolactone 12.5% Glycerin 5% PEG-20 2.8% Sodium hyaluronate 1.2% WFI 78.5 %	Polycaprolactone 21% poly(ethylene glycol) 0.5% WFI 78.5%	Polycaprolactone 12.5% Poly(vinyl alcohol) 2.5% Sodium hyaluronate 0.8% WFI 84.2%
Viscosity [mPa·s]		473	996	255
Osmolarity		57	99.7	30
pH		6.0	5.1	5.4
Particle size & Graph		Dv (10): 85 nm Dv (50): 172 nm Dv (90): 13,200 nm span : 76.136 	Dv (10): 111 nm Dv (50): 234 nm Dv (90): 516 nm span : 1.736 	Dv (10): 217 nm Dv (50): 468 nm Dv (90): 1,310 nm span : 2.346 
Injection Force (1~10N)		30G 33G	2.6 4.6	3.3 4.7
USE		Cosmetics	Medical Devices	Medical Devices

# Procedure:

## **Injection depth: dermis layer**

- Cheeks: inject at a 60-degree angle by AI 1.8mm needle
- Under eyes areas: inject at a 30-degree angle by AI 1.8mm needle

## **Method:**

- Full face: Meso injector with 34G needle or direct injection with 33G – 34G needle
- Under eyes: Direct injection with 34G needle

[Recommended injection amount: 2cc for full face and 1cc for both under eyes areas]

[Number of treatments: 2 to 3 sessions within 1 month and additional treatments after 6 months or 1 year are recommended]

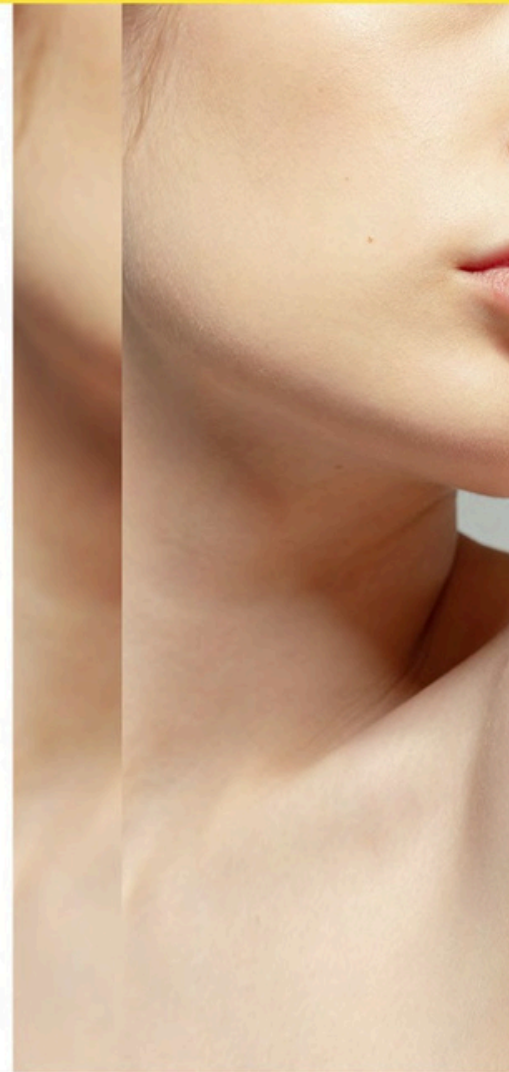
## **Caution:**

It is recommended to use one needle for every 1cc of product

In case of bleeding, change needle and continue the treatment

Use up all product after opening or discard the remaining

Be careful when injecting around the eyes, nose and mouth





LPG

CLINICS WHOLESALE

THE UK AND IRELAND OFFICIAL DISTRIBUTOR OF iLLUMA

The logo for iLLUMA PCL is centered within a white rectangular frame with a yellow border. It features a large yellow circle behind the word "iLLUMA" in a bold, black, sans-serif font. The letters "i", "L", "L", "U", "M", and "A" are lowercase, while the "P" and "C" in "PCL" are uppercase. The background of the entire image is a warm, orange-yellow gradient, with a white bowl and a white sphere on a yellow surface in the foreground.

[www.lpgclinicswholesale.com](http://www.lpgclinicswholesale.com) | [info@lpgclinicswholesale.com](mailto:info@lpgclinicswholesale.com)